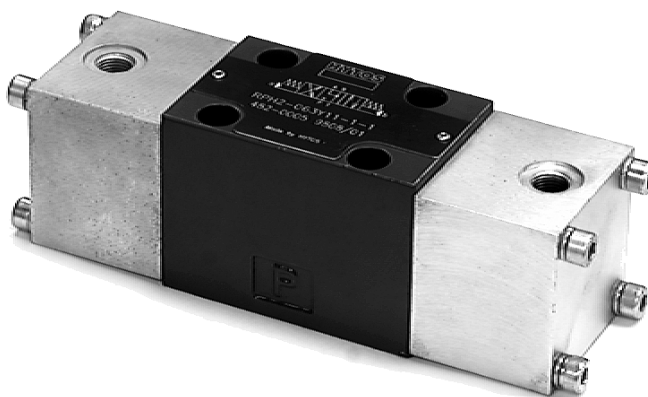


- 4/3, 4/2 way spool type directional valves hydraulic operated
- Installation dimensions to DIN 24 340 / ISO 4401 / CETOP RP121-H
- Three-chamber valve

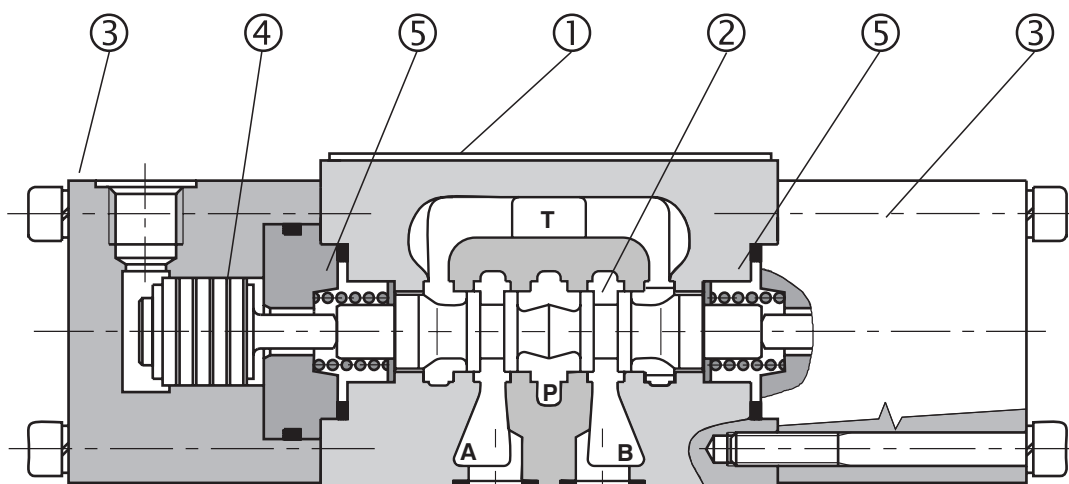


## Functional Description

The directional control valves are of modular design and comprise a housing (1) with a cylindrical spool (2) and one or two operating elements (3) consisting of hydraulic pistons (4) and return spring (5). Three-position directional valves are fitted with two hydraulic operating elements and two centering

springs. Two-position directional valves have only one hydraulic operating element and one springs.

The basic surface treatment of valve is phosphate coated.



## Ordering Code

RPH2-06   /  -1

**Hydraulic Pilot Operated Directional Valve**

**Nominal size**

**Number of operating positions**

two positions  
three positions

**Functional symbols**

see the table functional symbols

**2**  
**3**

no designation  
**V**

**Seals**  
NBR  
FPM (Viton)

**Model**

**Connecting threads**

**1**  
**2**  
**3**

M10x1  
G1/8  
7/16-20 UNF

## Technical Data

Valve size	mm	06
Maximum flow (according to pressure and functional symbols)	L/min	see p-Q characteristics
Maximum operating pressure at ports P, A, B	bar	320
Maximum operating pressure at port T	bar	120
Minimum pilot pressure	bar	30 + pressure at port T
Maximum pilot pressure	bar	160
Pilot volume	cm <sup>3</sup>	0.5
Pressure drop	bar	see Δp-Q characteristics
Hydraulic fluid		Hydraulic oils of power classes (HL, HLP) to DIN 51524
Fluid temperature range for standard sealing (NBR)	°C	-30 ... +100
Fluid temperature range for Viton seals (FPM)	°C	-20 ... +120
Viscosity range	mm <sup>2</sup> /s	20 ... 400
Maximum degree of fluid contamination		Class 21/18/15 to ISO 4406 (1999).
Service life	cycles	10 <sup>7</sup>
Weight valve with 1 actuator valve with 2 actuators	kg	1.8 2.5
Mounting position		optional

## Spare Parts

### Bolt kit

Dimensions, number	Tightening torque	Ordering number
M5 x 45 DIN 912-10.9	8.9 Nm	484-9958

### Seal kit

Type	Dimensions, number		Ordering number
	O-ring	Square ring	
Standard NBR	22 x 2 NBR90 (2 pcs.)	9.25 x 1.68 NBR70 (4 pcs.)	482-9000
	28 x 2 (2 pcs.)	-	
Viton	22 x 2 (2 pcs.)	9.25 x 1.78 (4 pcs.)	482-9001
	28 x 2 (2 pcs.)	-	

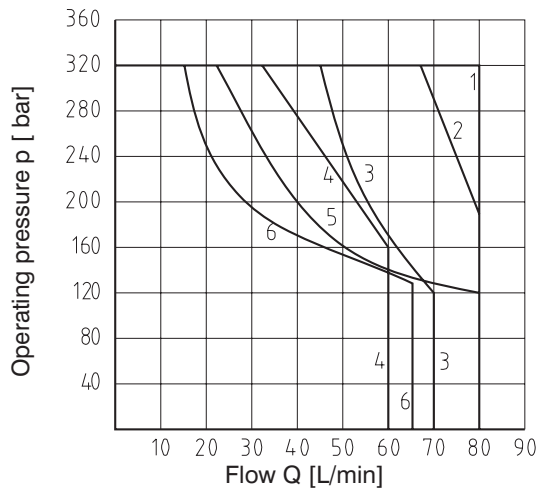
# Functional Symbols

Type	Symbol	Crossover	Type	Symbol	Crossover
Z11			C51		
C11			H51		
H11			Y51		
Y11			Y11		
L21			H11		
R11			X11		
A51			Z11		
Z51			J15		

## p-Q Characteristics

Measured at  $v = 32 \text{ mm}^2/\text{s}$

Operating limits for maximum hydraulic power transferred by the directional valve. Measured by steering pressure 30 bar + pressure at port T. For respective spool type - see spool symbols.

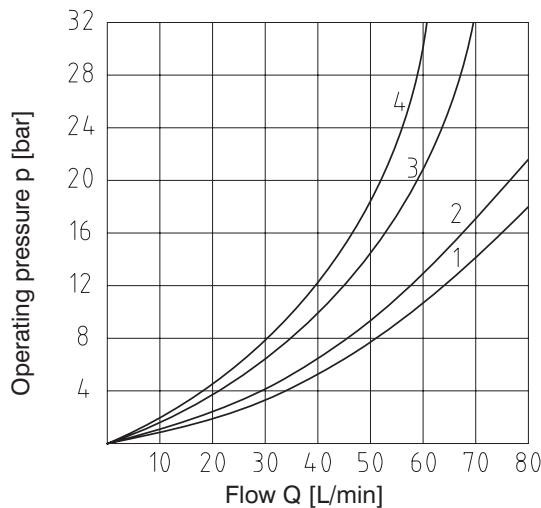


H11	1
H51	1
C11	1
C51	1
Z11	2
Z51	2
J15	3
R11	4
X11	4
A51	5
Y11	6
Y51	6

## $\Delta p$ -Q Characteristics

Measured at  $v = 32 \text{ mm}^2/\text{s}$

Pressure drop  $\Delta p$  related to flow rate.



	P-A	P-B	A-T	B-T	P-T
Z11	1	1	2	2	
C11	3	3	3	4	2
H11	1	1	1	1	2
H51	1	1	1	1	2
Y11	1	1	1	1	
C51	3			4	2
Z51		1	2		
R11	1	1	2	2	
A51	1	1			
Y51		1	1		
X11	1	1	2	2	
J15	1	1	2	2	

